

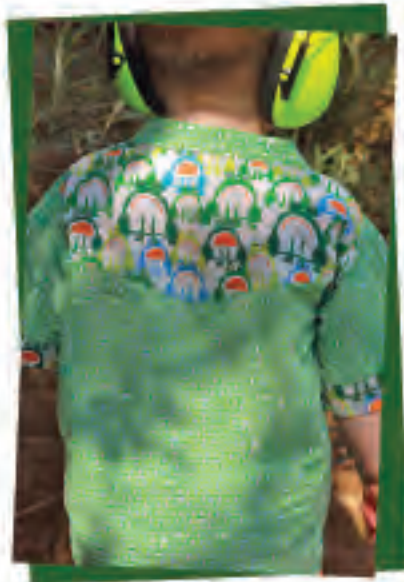


TODDLER SHIRT PATTERN  
IN 3 SIZES: 2-3YRS, 3-4 YRS, 4-5 YRS

*Barmy Beetroot*







SIZE	CHEST (CM)	PDF PAGES
Age 2+	55cm	3-14
Age 3+	57cm	15-26
Age 4+	59cm	27-38

## DESCRIPTION:

A short sleeved casual shirt, featuring a western style yoke at the back, reinforced collar/button panel, and rollback sleeves. I used to dress my son in t-shirt after t-shirt, but designing and making these shirts has revamped his wardrobe. I love the way they look on kids, and I think they like wearing them too.

## MATERIALS:

Main Fabric: cotton, corduroy, linen, denim would all work well. I opted for something plain for the main fabric, and something busier for the yoke. You'll need 1 metre of fabric.

Co-ordinating Fabric: A similar weight fabric to above, in contrasting colour. You'll need 0.25 metres.

Notions: 5 Buttons and matching thread, fusible interfacing for collar and button area.

## IMPORTANT!

This is a digital PDF pattern which you need to print out and tape together. Make sure your printer is not set to scale or fit to page when you print, as the sizing will be incorrect. Use the 1 inch square opposite as a reference to check print accuracy.

Each size is on different pages, so just print the pages you need.

A 1/2 inch seam allowance has been marked on each pattern.

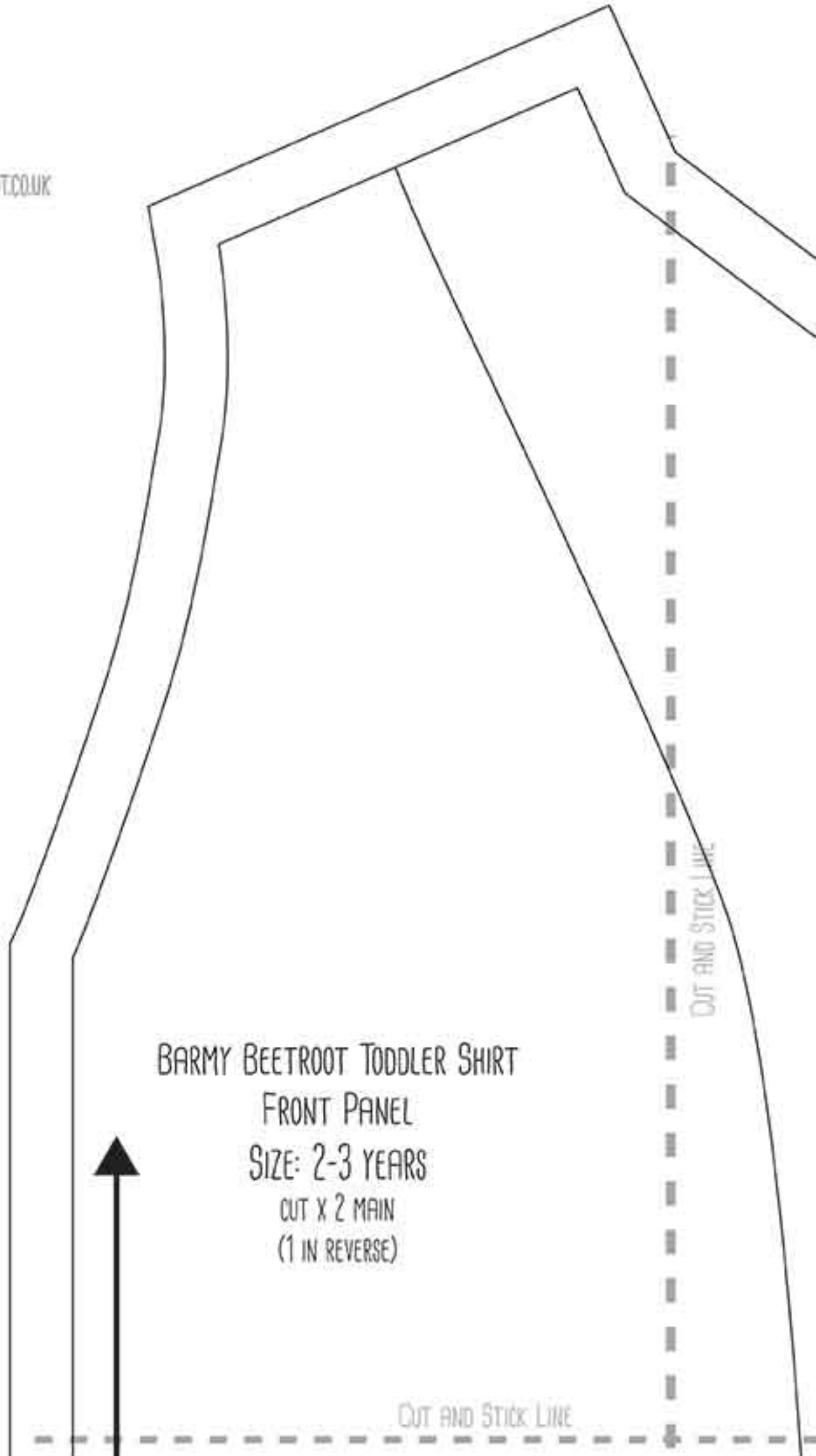
1 INCH

*Barmy Beetroot*



By: Amy Beeton

Blog: [www.barmybeetroot.co.uk](http://www.barmybeetroot.co.uk)



BARMY BEETROOT TODDLER SHIRT

FRONT PANEL

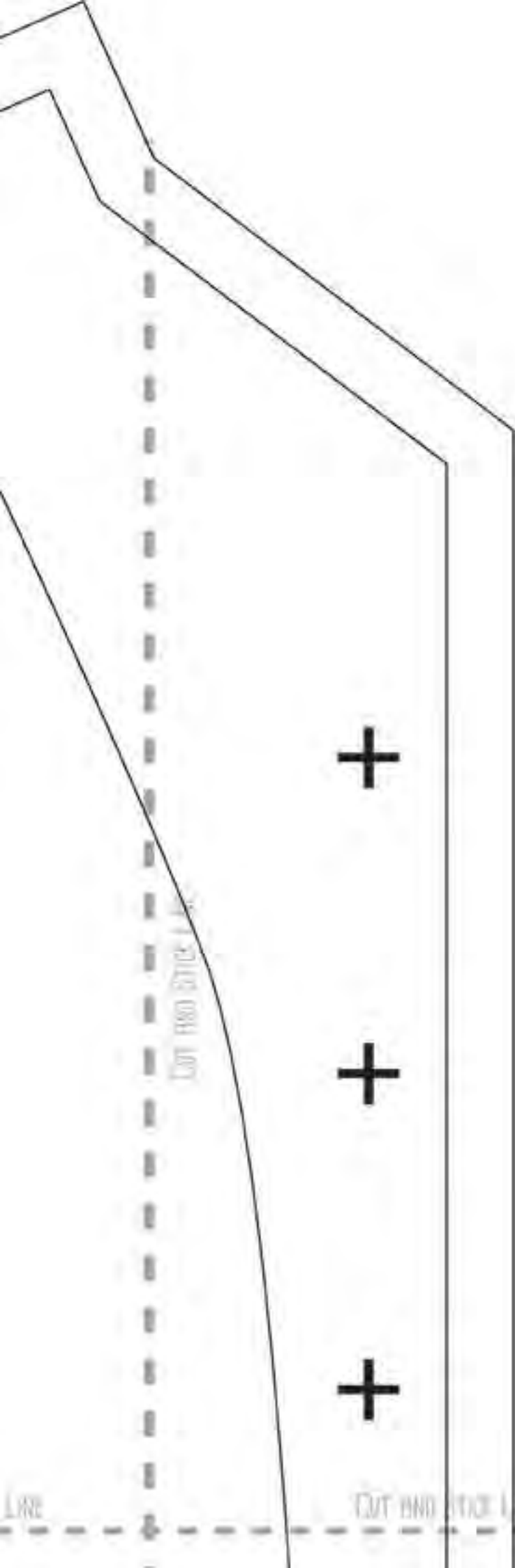
SIZE: 2-3 YEARS

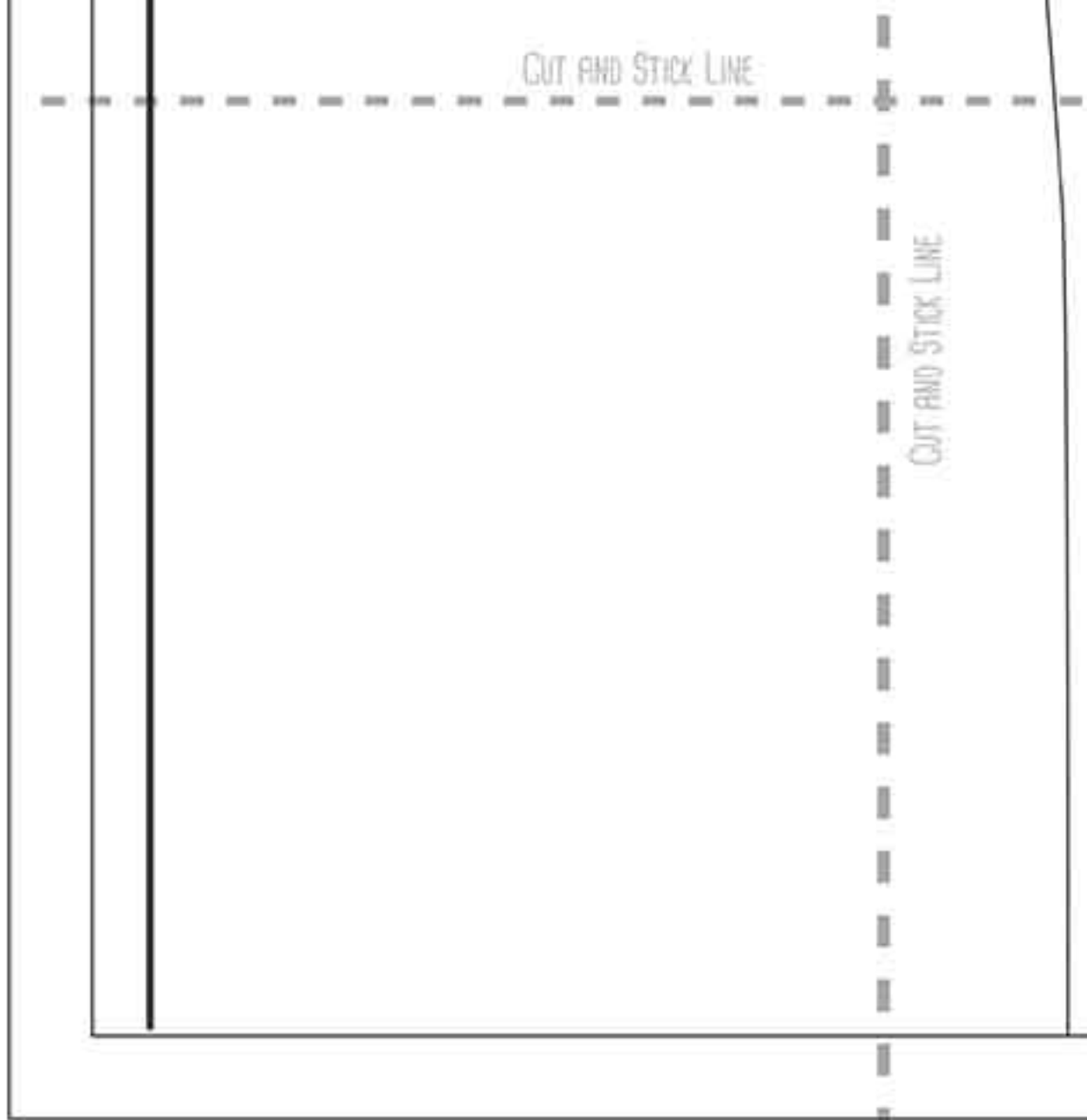
CUT X 2 MAIN

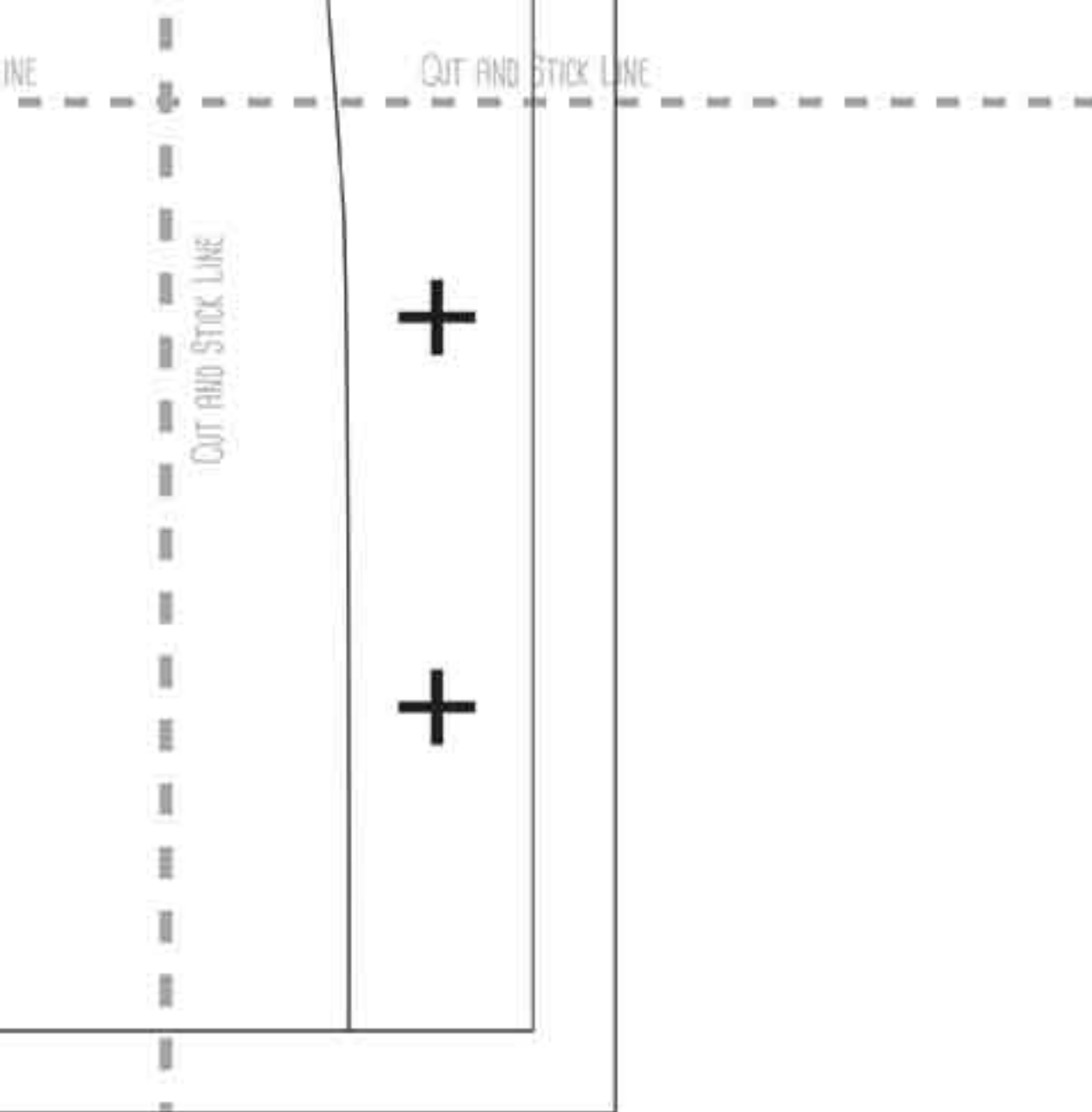
(1 IN REVERSE)

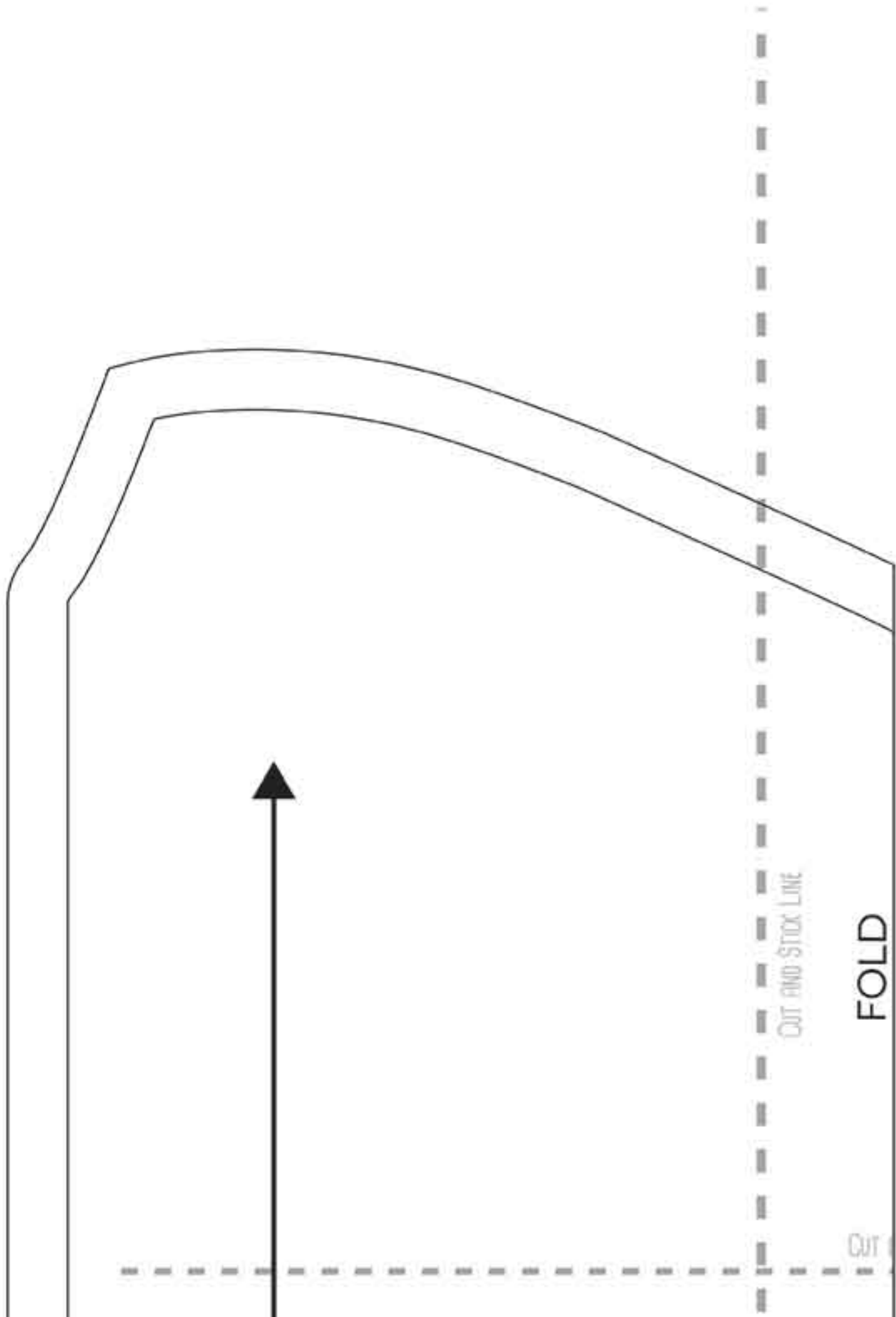
CUT AND STICK LINE

CUT AND STICK LINE









CUT AND STICK LINE

FOLD

CUT

CUT AND STICK LINE

FOLD

BARMY BEETROOT TODDLER SHIRT  
COLLAR  
SIZE: 2-3 YEARS  
CUT X 2 MAIN





CUT

BARMY BEETROOT TODDLER SHIRT  
BACK PANEL  
SIZE: 2-3 YEARS  
CUT X 1 MAIN

CUT AND STICK LINE

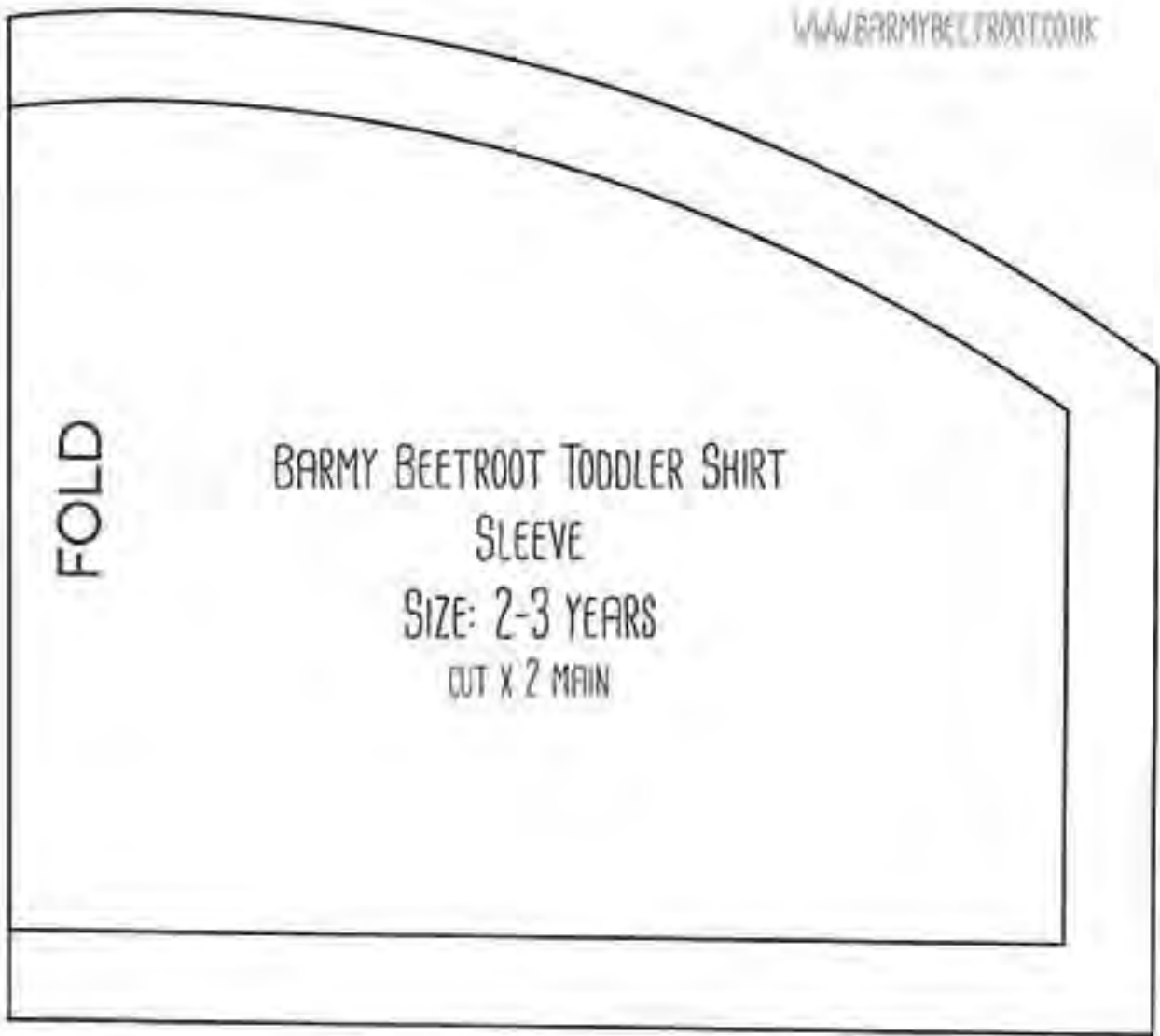
FOLD

TODDLER SHIRT  
ANEL  
YEARS  
AIN

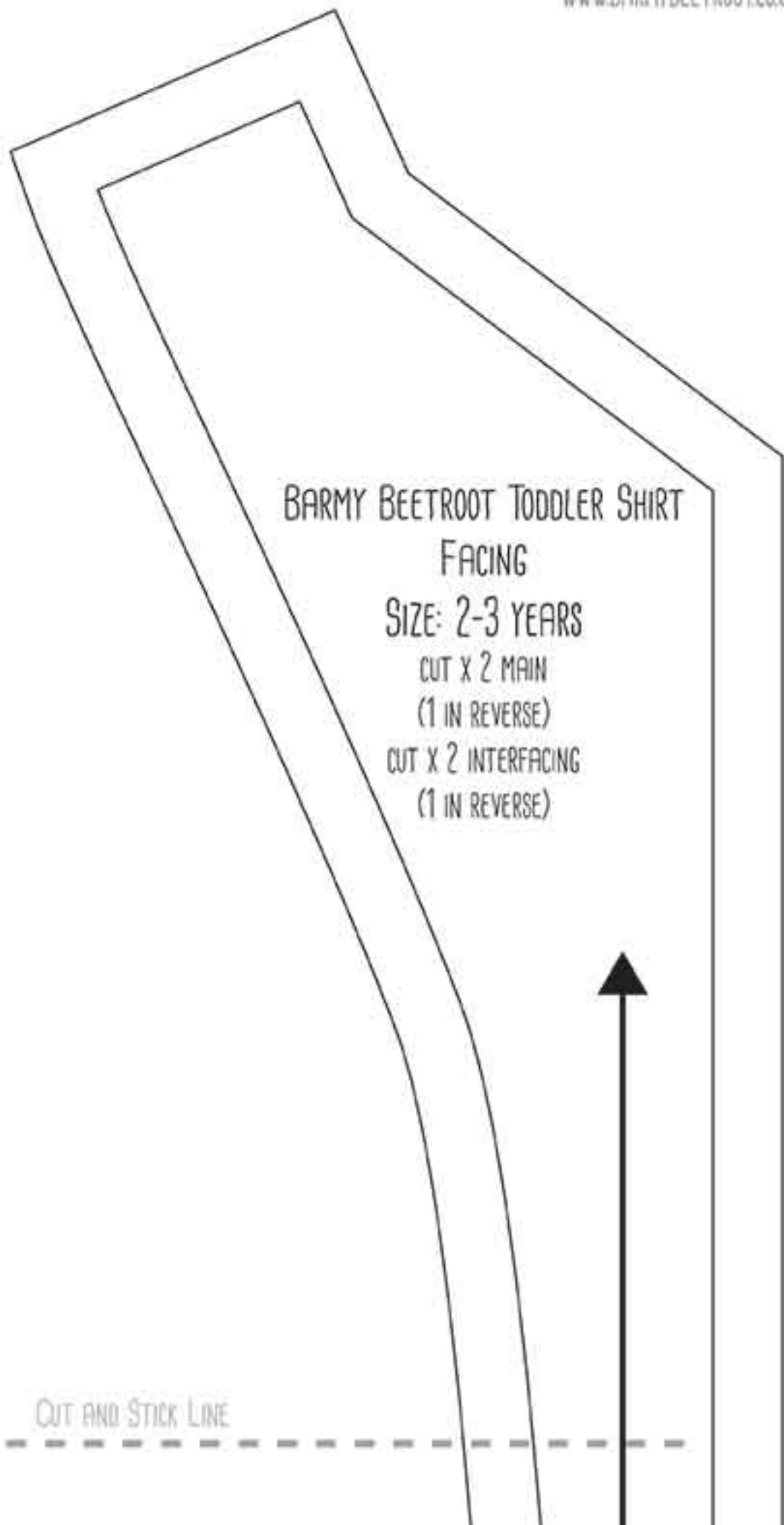
CUT AND STICK LINE

FOLD

CUT  
LINE



CUT AND FINISH LINE



BARMY BEETROOT TODDLER SHIRT  
FACING

SIZE: 2-3 YEARS

CUT X 2 MAIN

(1 IN REVERSE)

CUT X 2 INTERFACING

(1 IN REVERSE)

CUT AND STICK LINE

CUT AND STICK LINE

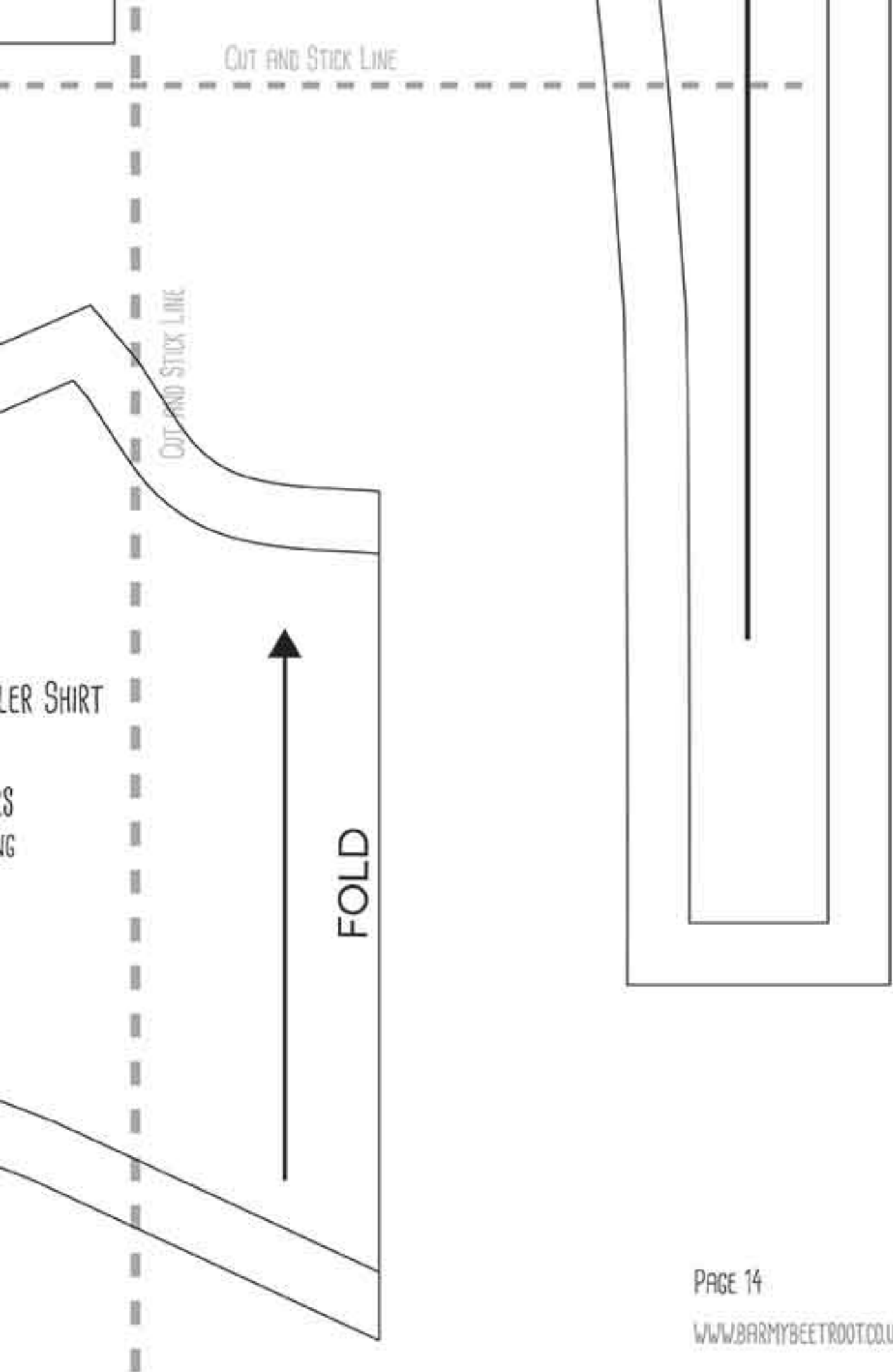


CUT AND

CUT AND STICK LINE

BARMY BEETROOT TODDLER SHIRT  
BACK YOKE  
SIZE: 2-3 YEARS  
CUT x 1 CONTRASTING





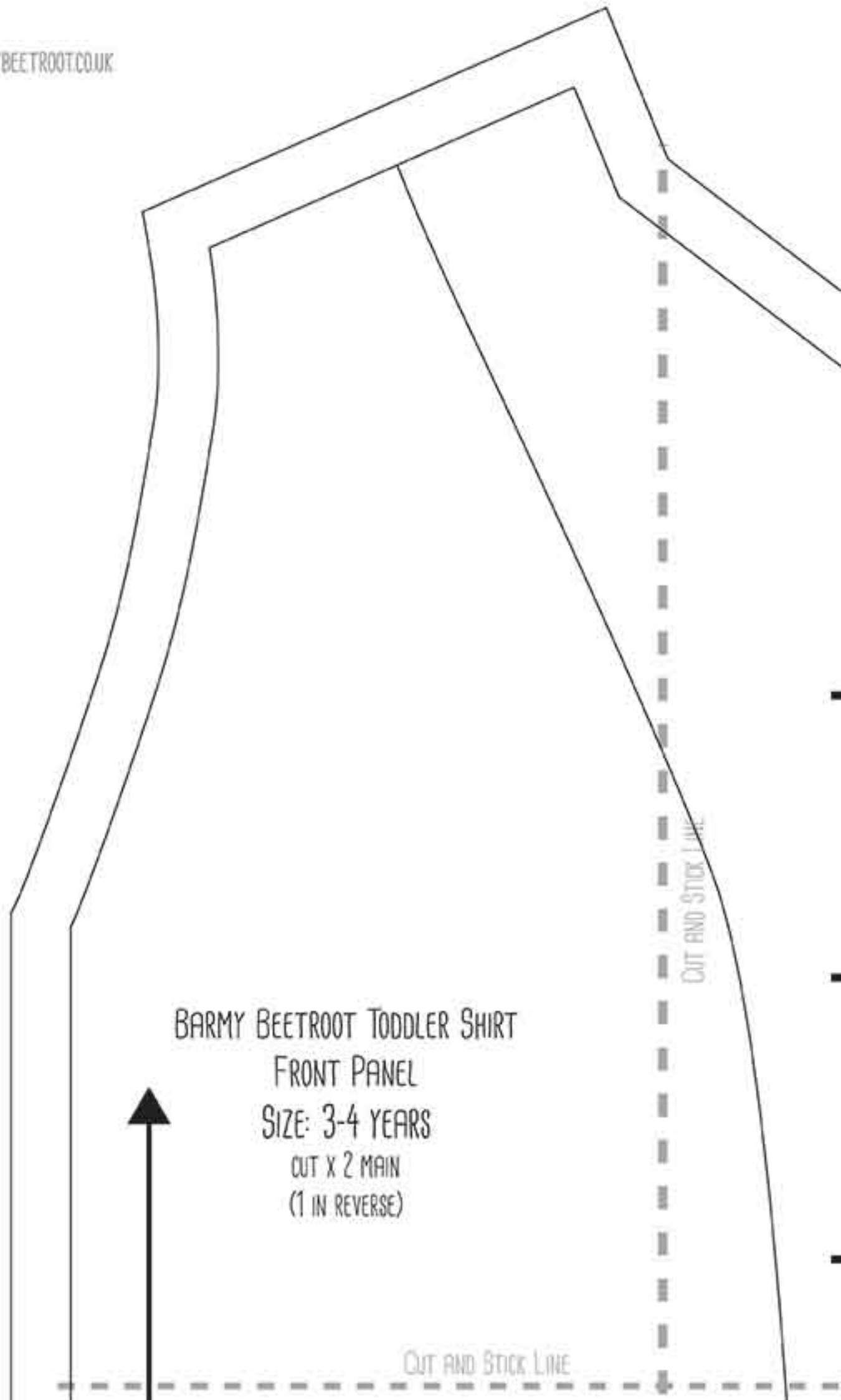
CUT AND STICK LINE

CUT AND STICK LINE

LER SHIRT

S  
NG

FOLD



BARMY BEETROOT TODDLER SHIRT

FRONT PANEL

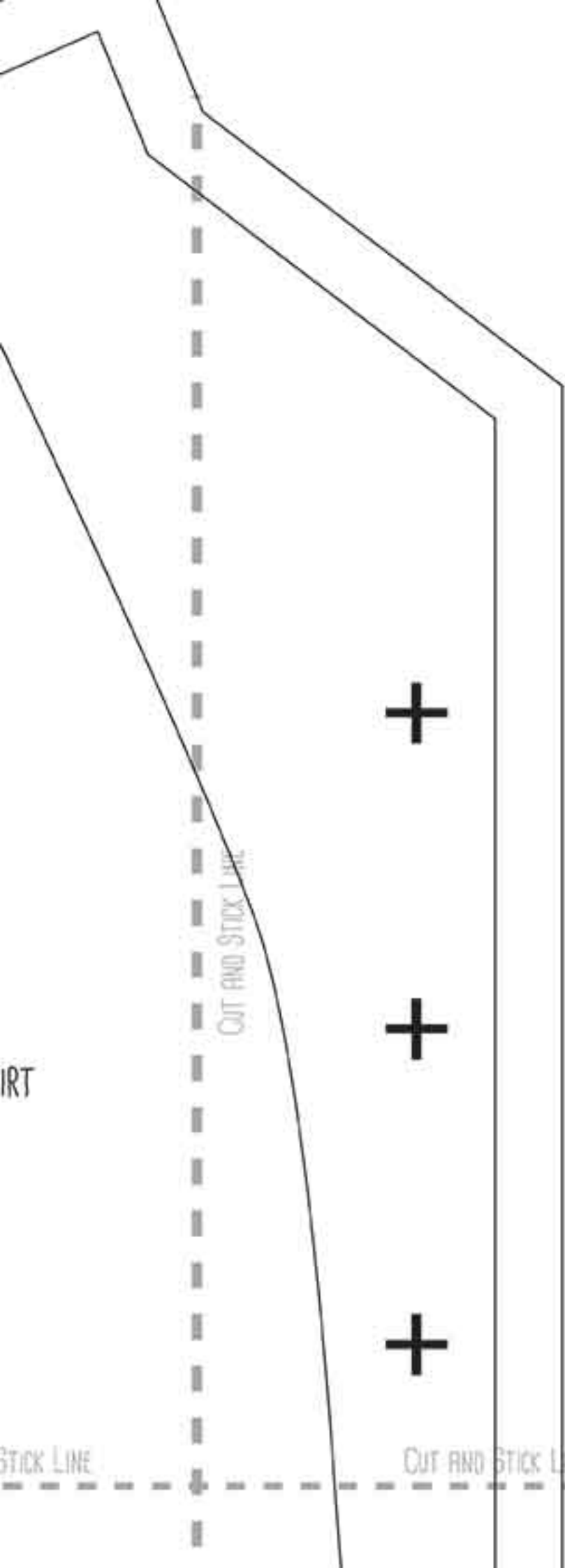
SIZE: 3-4 YEARS

CUT X 2 MAIN

(1 IN REVERSE)

CUT AND STICK LINE

CUT AND STICK LINE



PART

CUT AND STICK LINE

STICK LINE

CUT AND STICK LINE

CUT AND STICK LINE

CUT AND STICK LINE

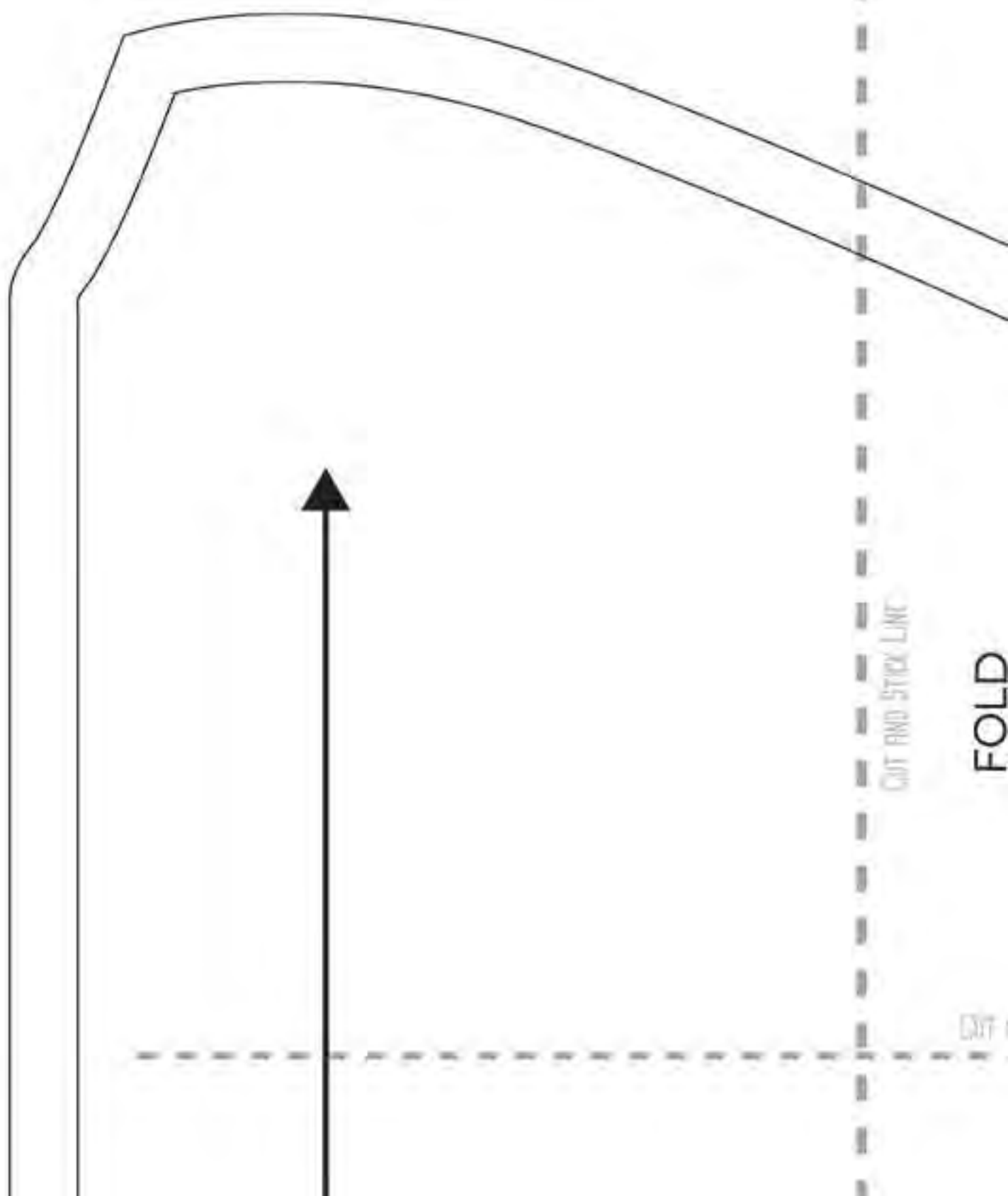
ick Line

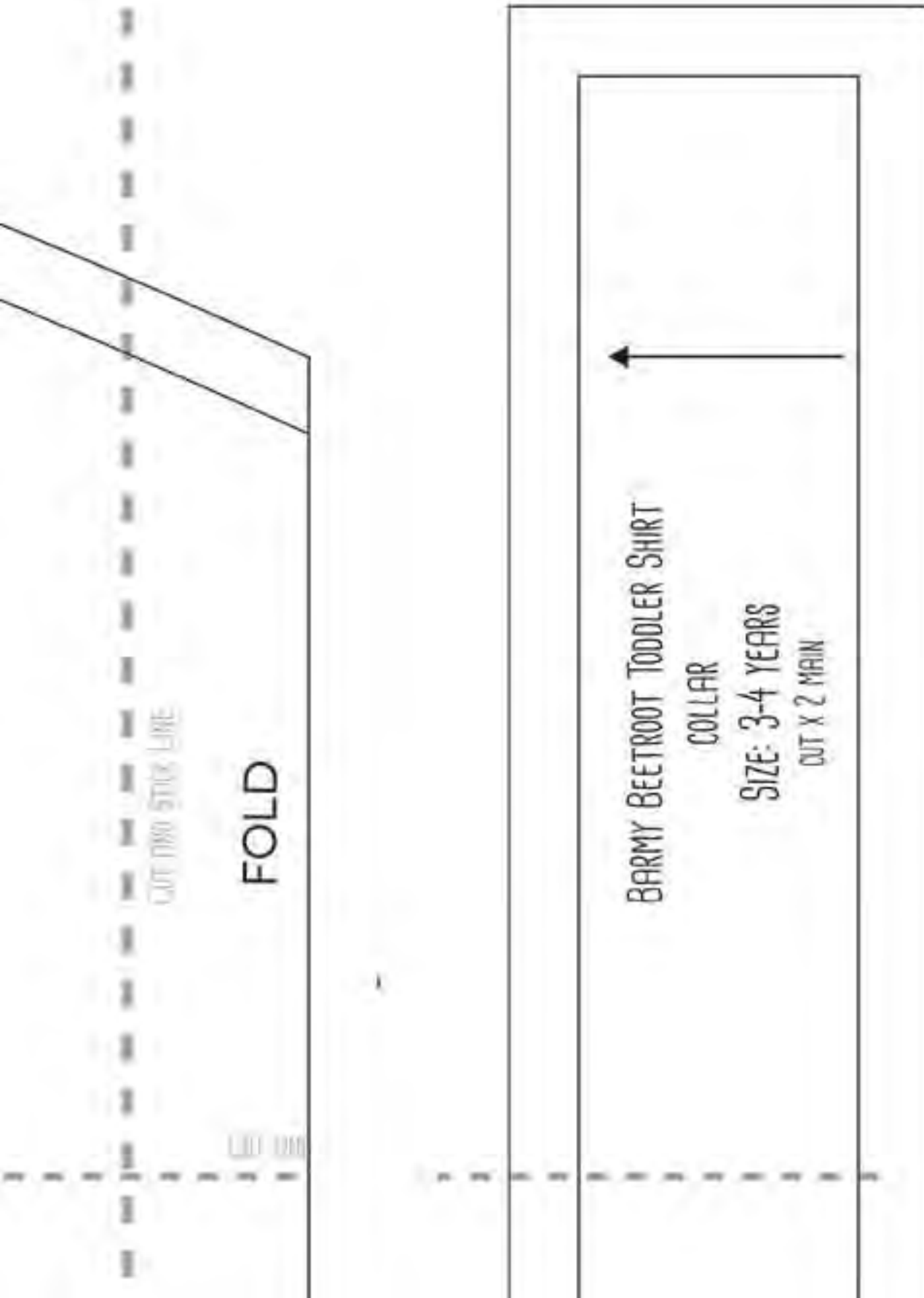
CUT AND STICK LINE

CUT AND STICK LINE







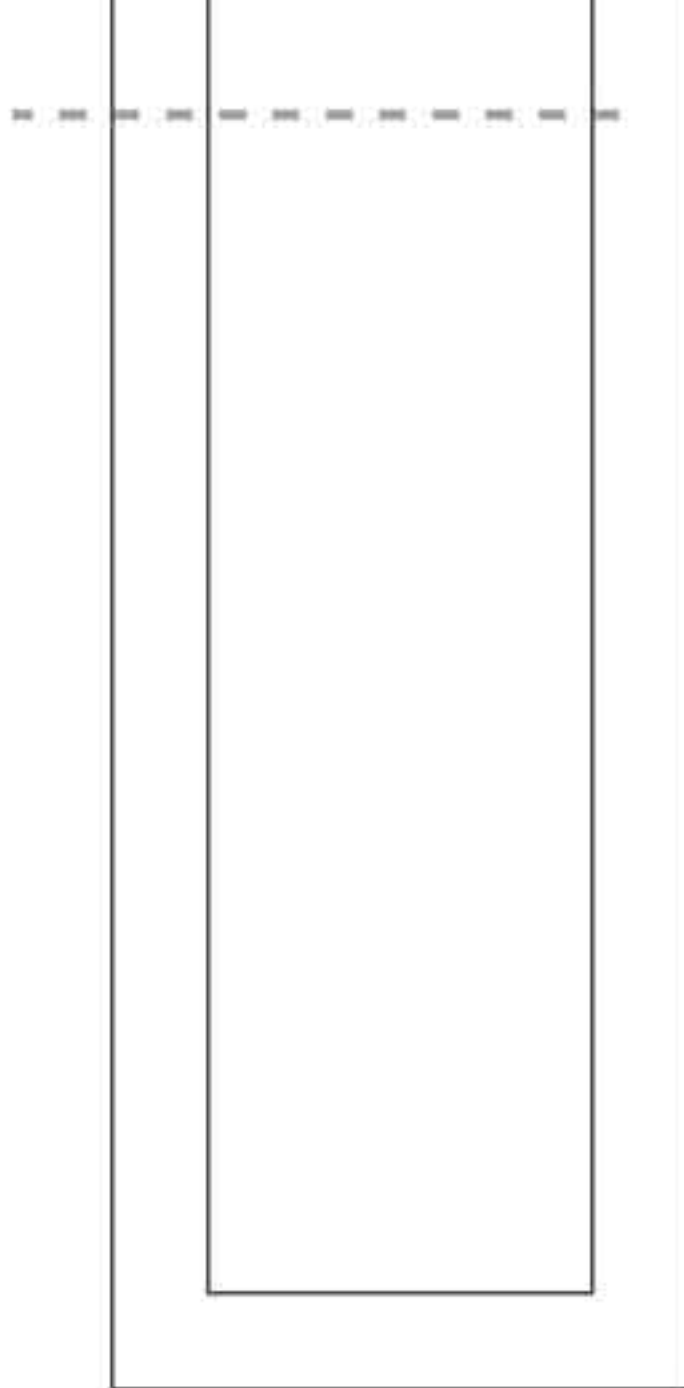


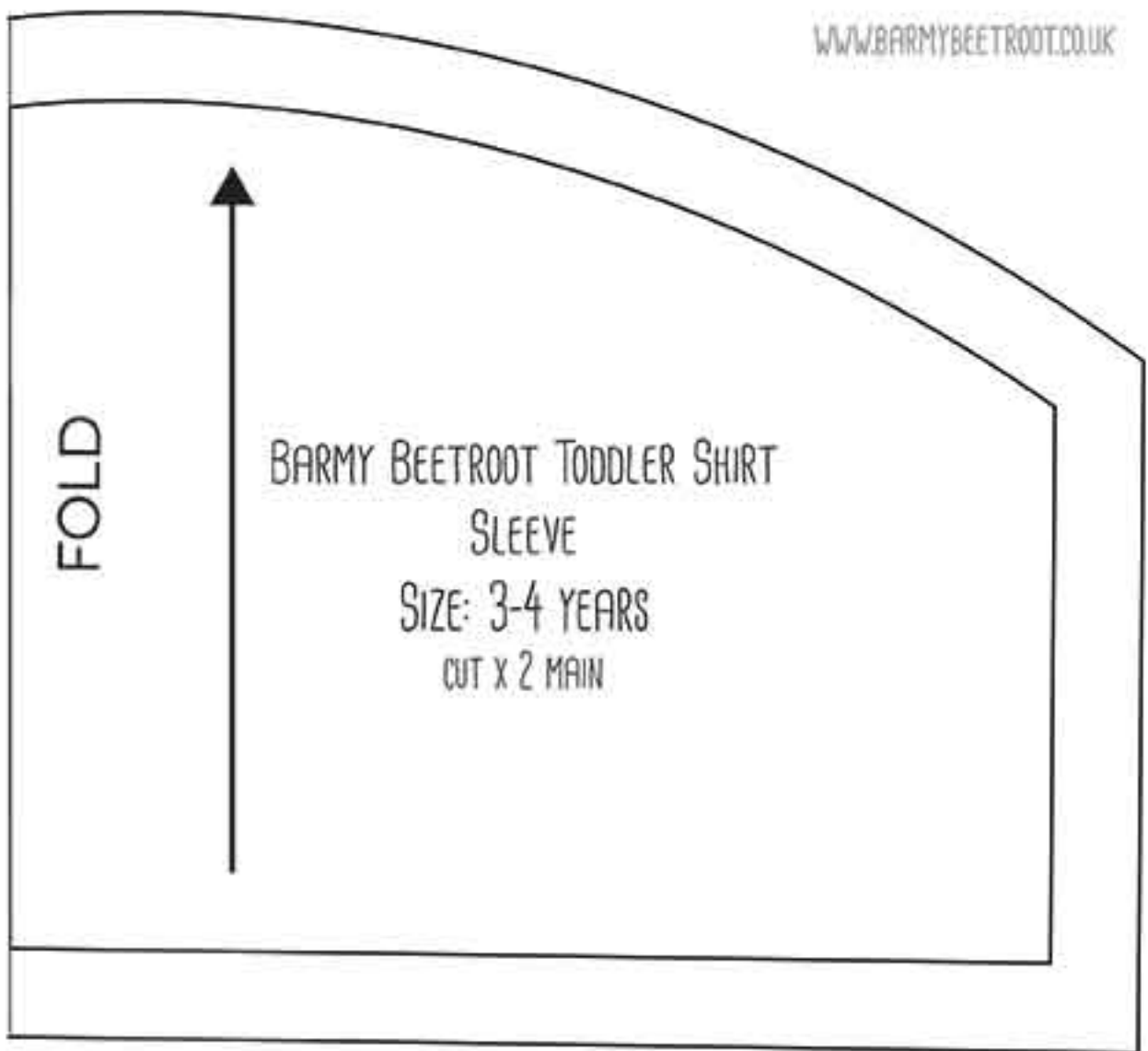
CUT F

BARMY BEETROOT TODDLER SHIRT  
BACK PANEL  
SIZE: 3-4 YEARS  
CUT X 1 MAIN

CUT AND STICK LINE

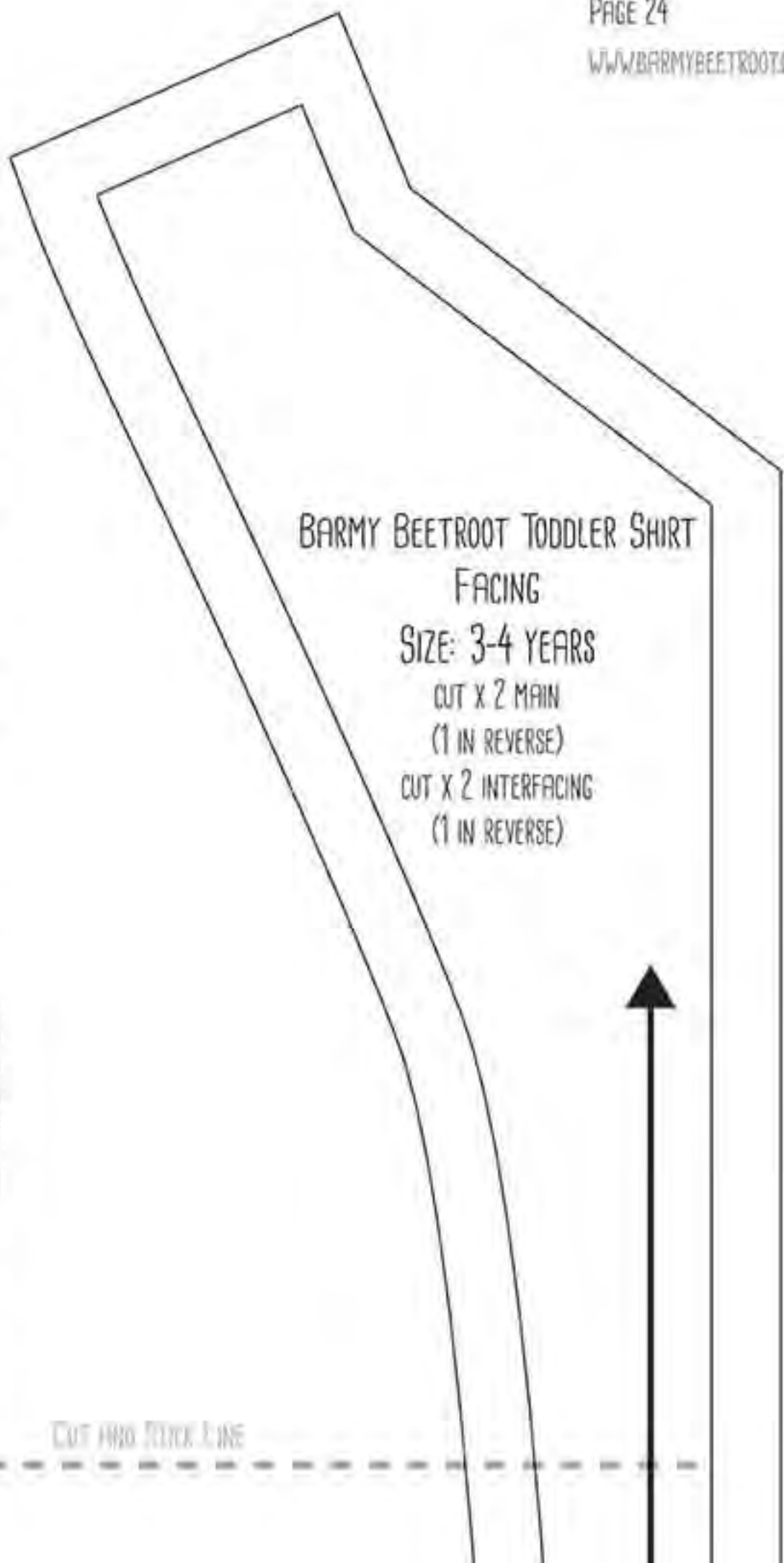
FOLD





CUT AND STICK LINE





BARMY BEETROOT TODDLER SHIRT  
FACING

SIZE: 3-4 YEARS

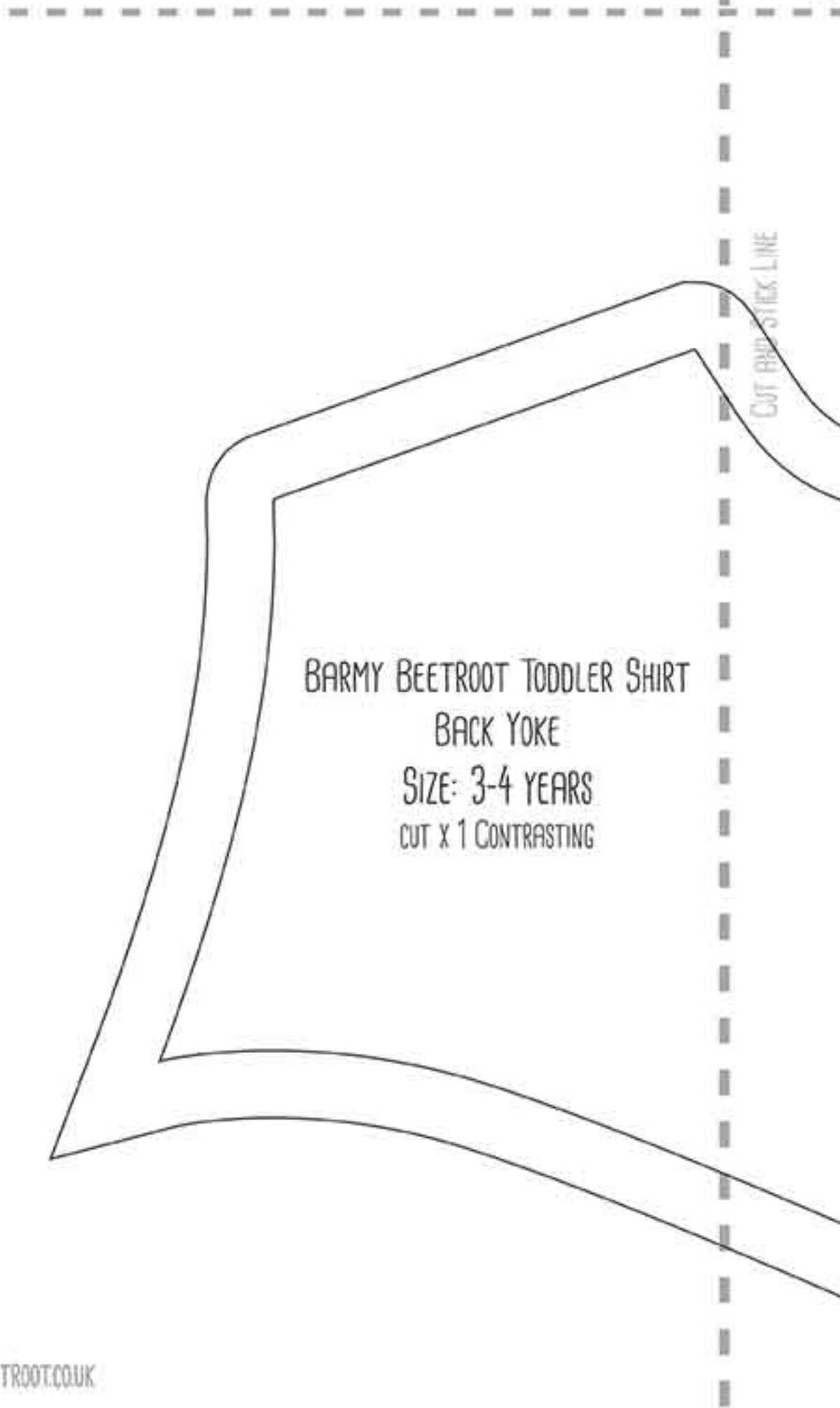
CUT X 2 MAIN  
(1 IN REVERSE)

CUT X 2 INTERFACING  
(1 IN REVERSE)

CUT AND STITCH LINE

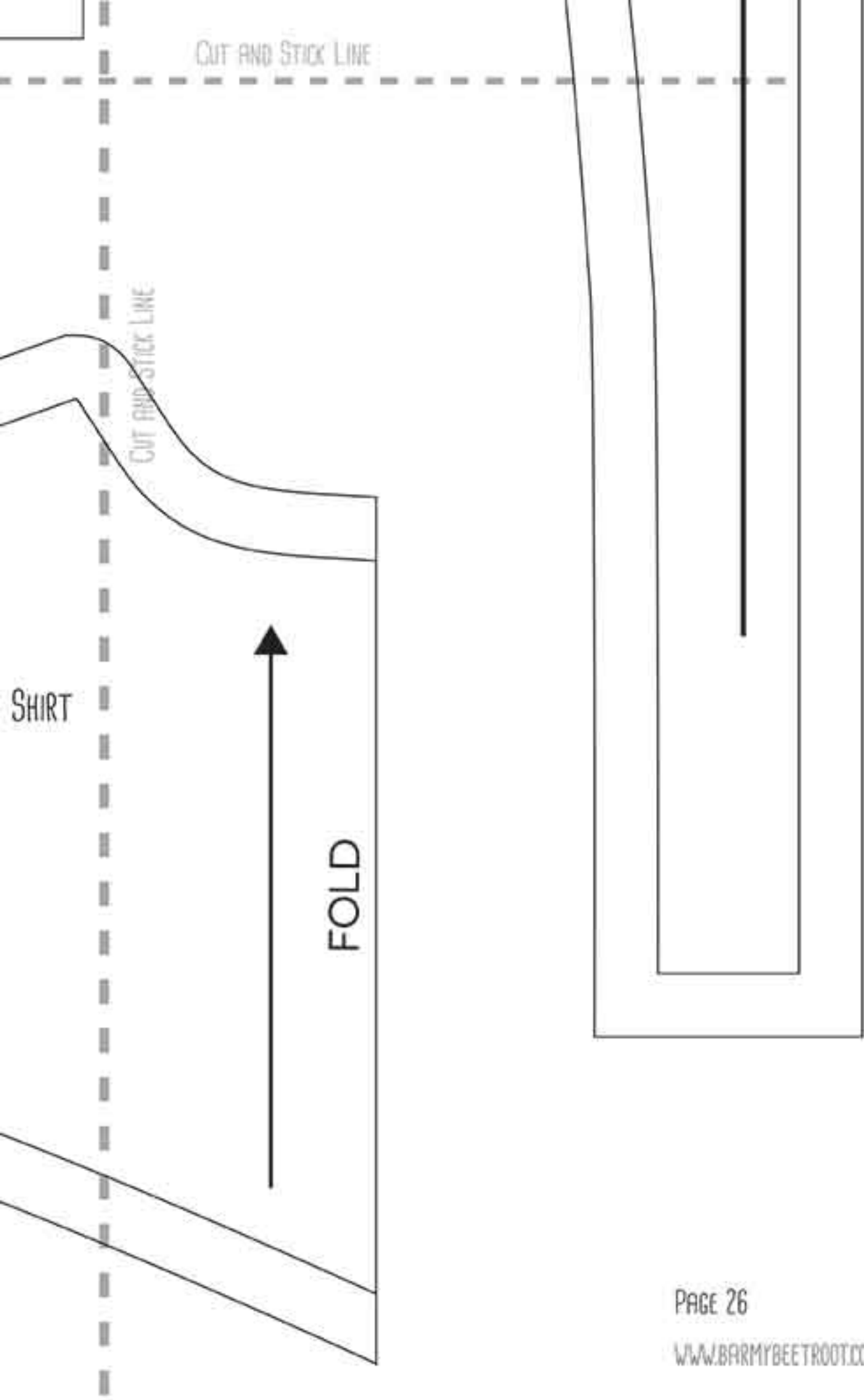
CUT AND STITCH LINE

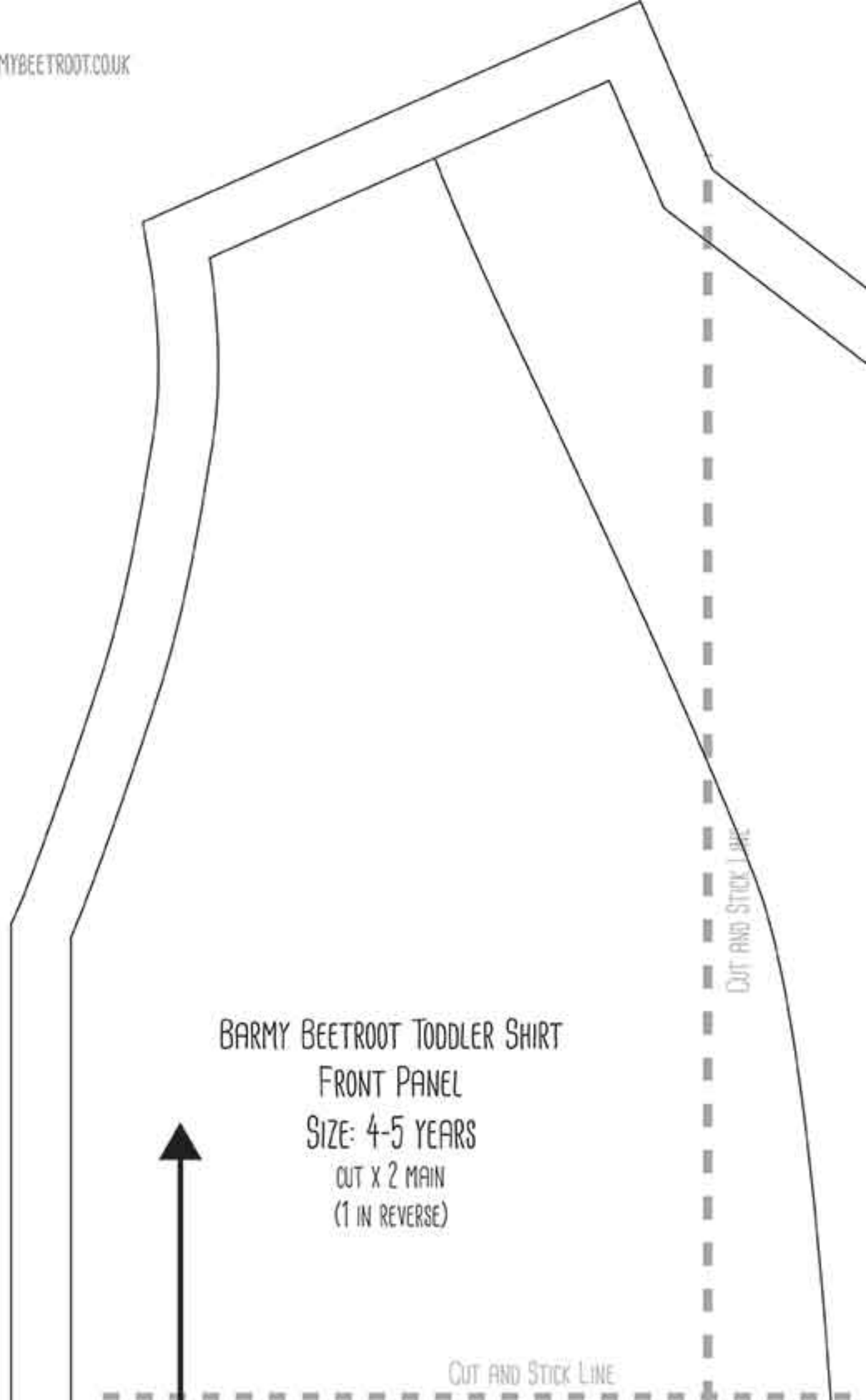




CUT AND STICK LINE

BARMY BEETROOT TODDLER SHIRT  
BACK YOKE  
SIZE: 3-4 YEARS  
CUT X 1 CONTRASTING

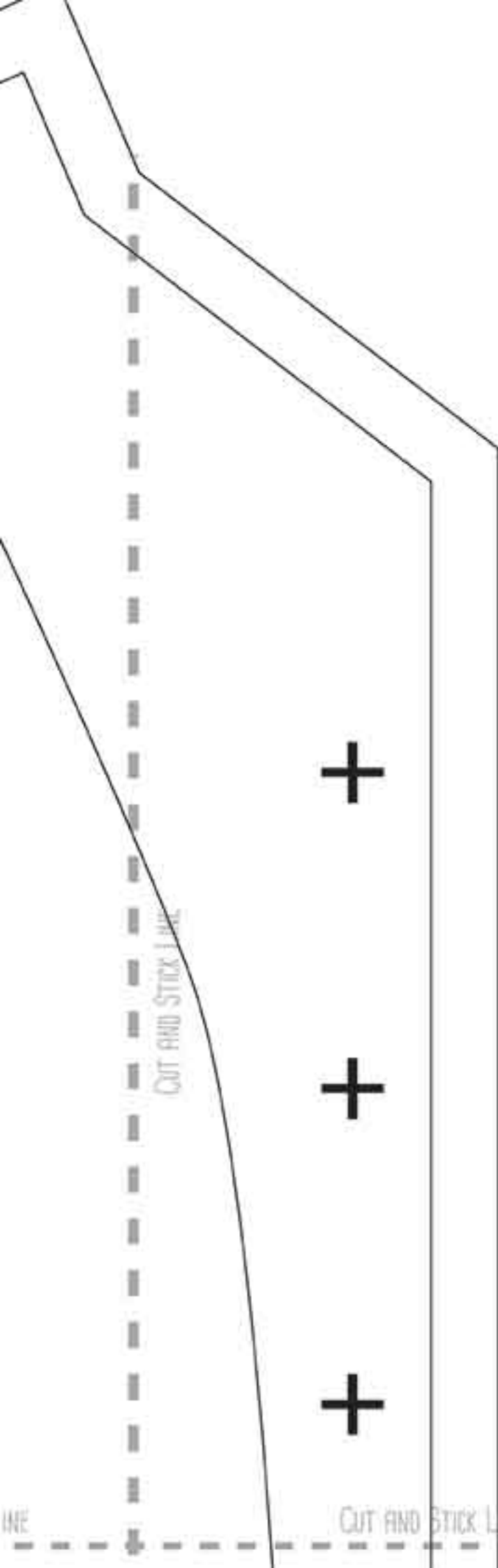




BARMY BEETROOT TODDLER SHIRT  
FRONT PANEL  
SIZE: 4-5 YEARS  
CUT X 2 MAIN  
(1 IN REVERSE)

CUT AND STICK LINE

CUT AND STICK LINE



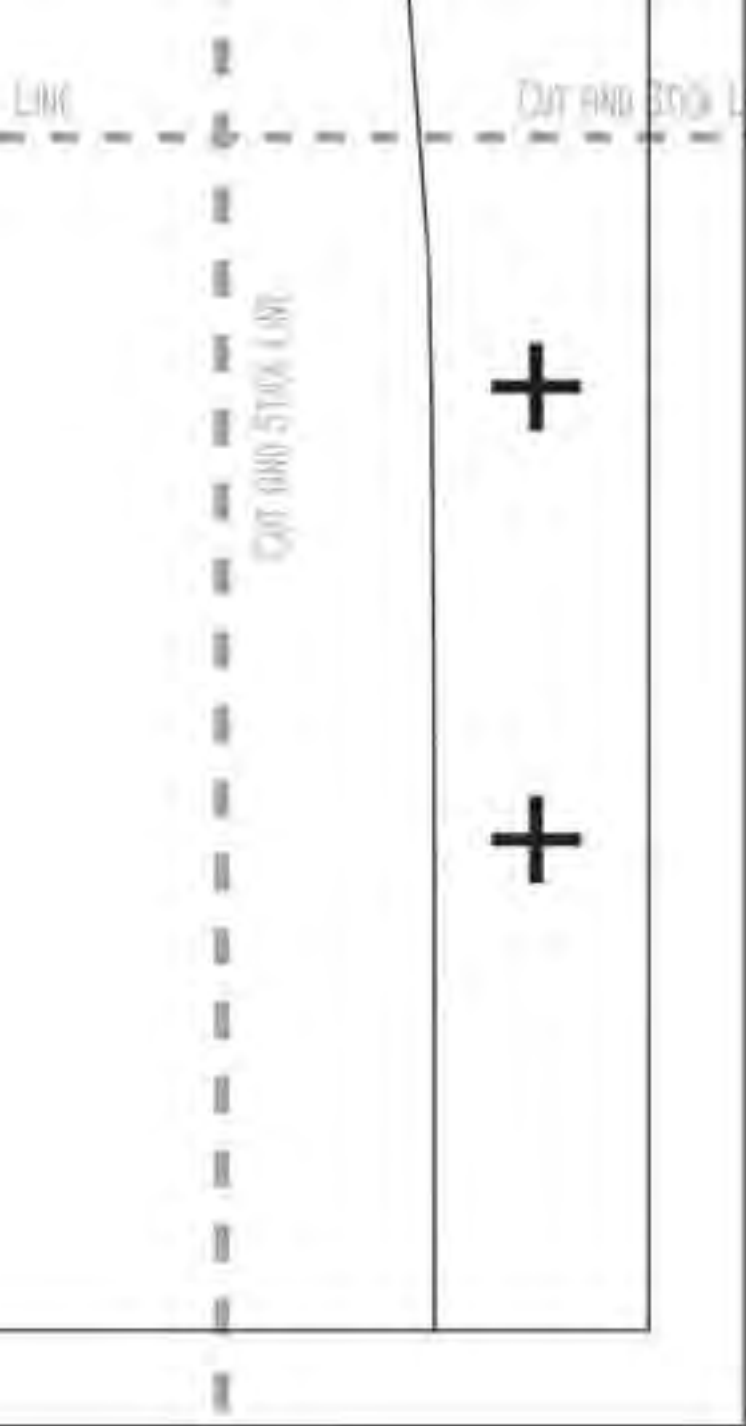
CUT AND STICK LINE

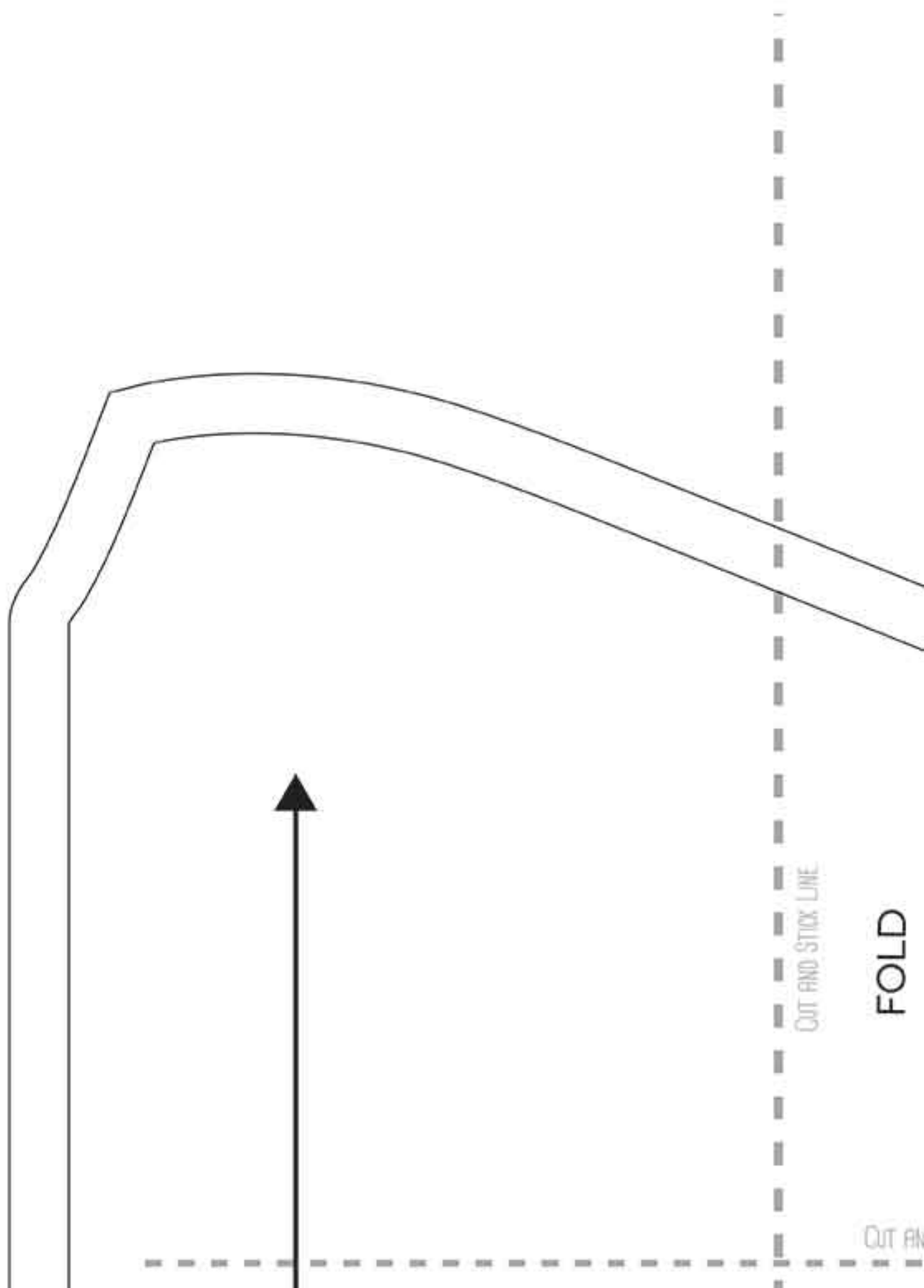
CUT AND STICK LINE



CUT AND STICK LINE

CUT AND STICK LINE

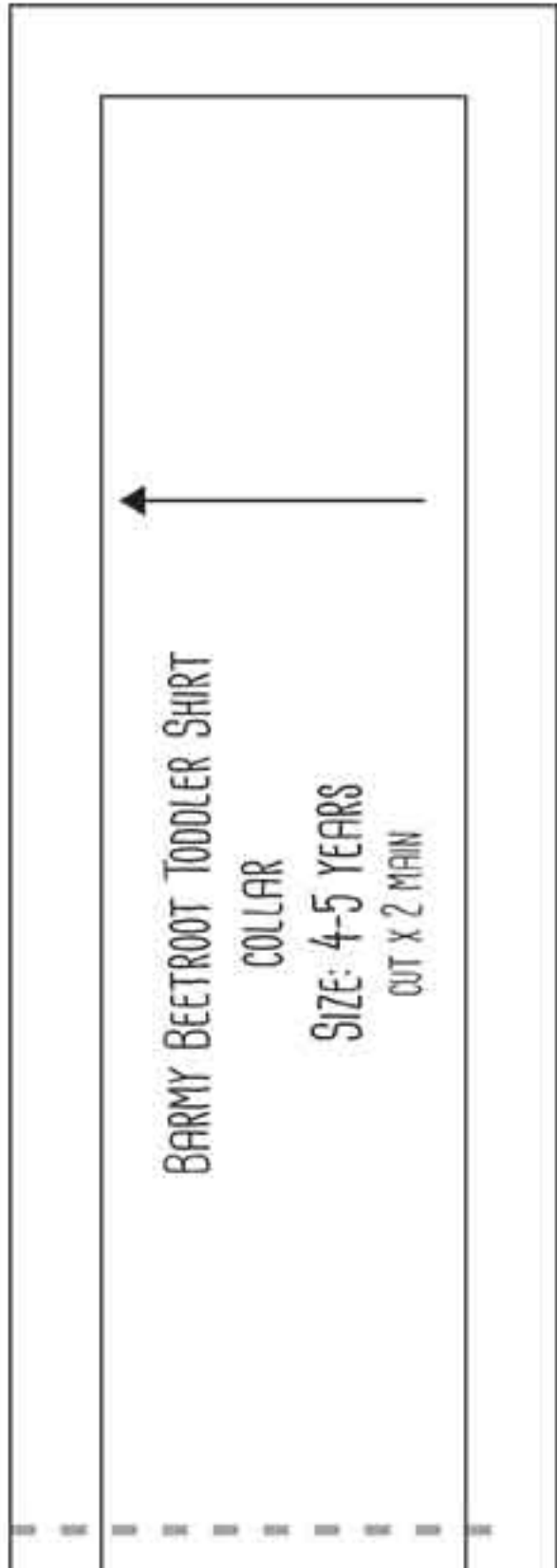
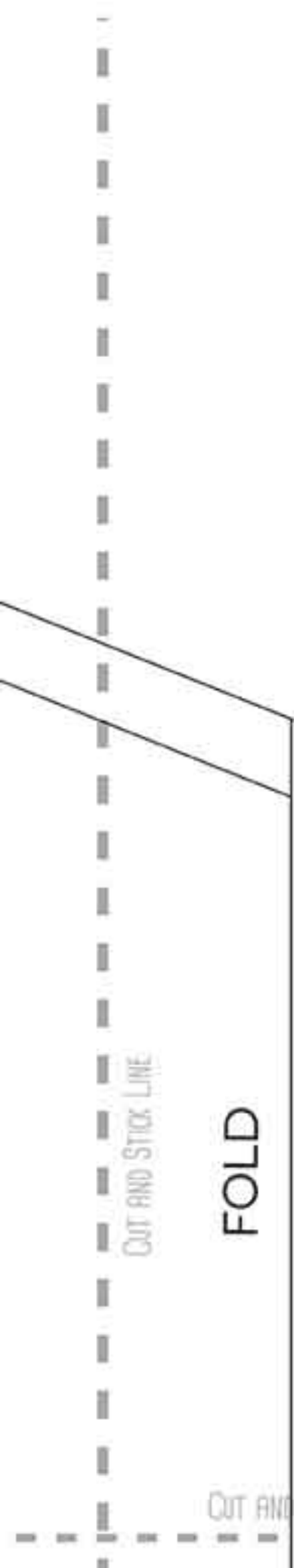




CUT AND STICK LINE

FOLD

CUT AN

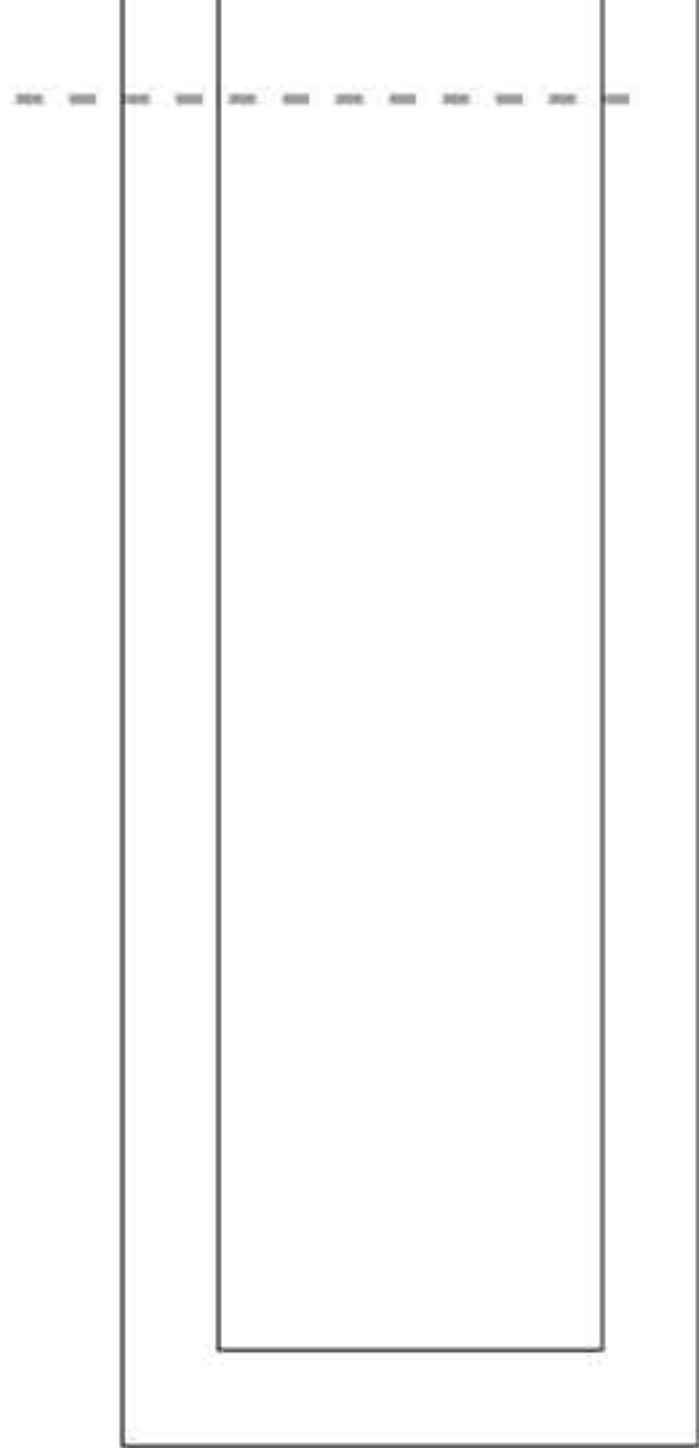


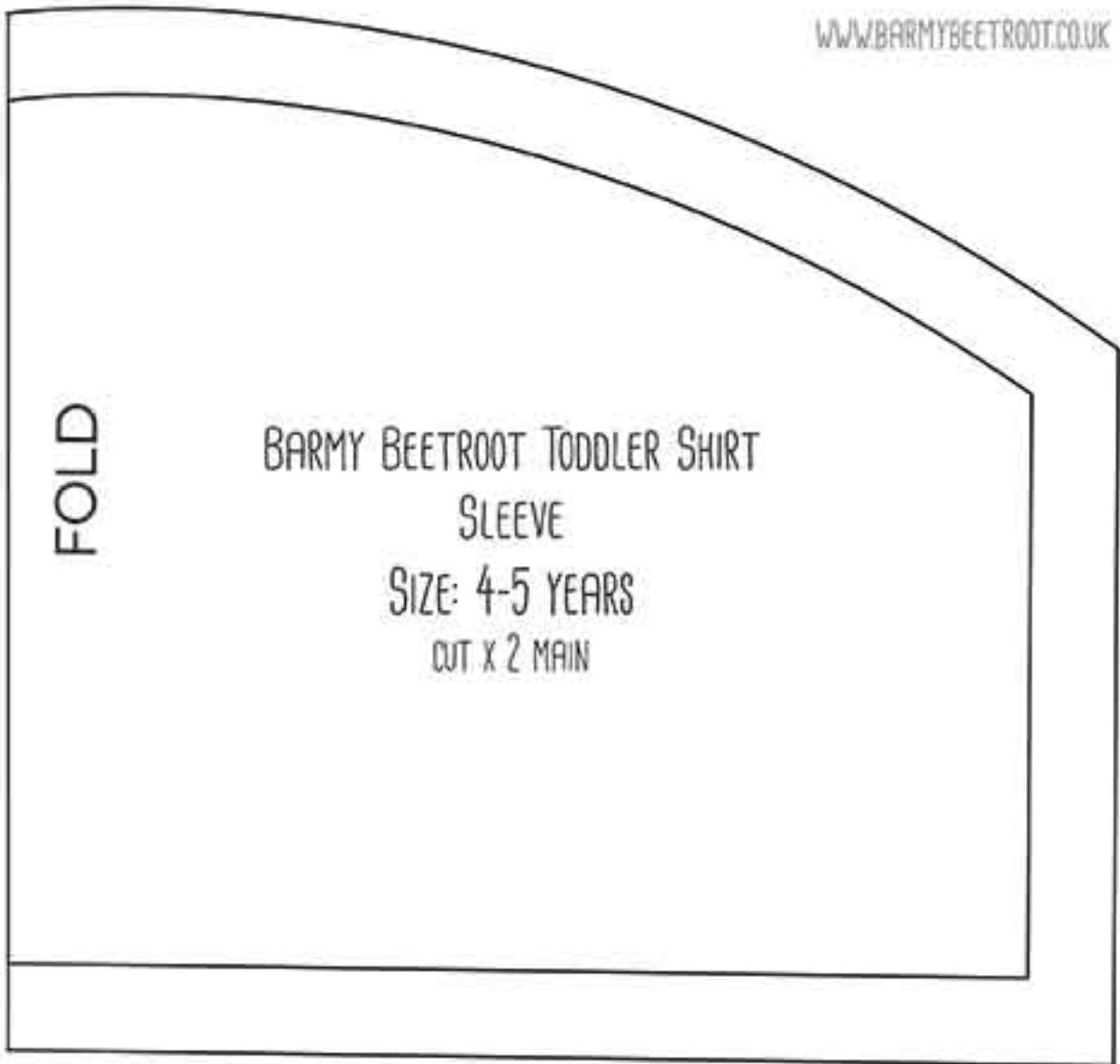
CUT AND

BARMY BEETROOT TODDLER SHIRT  
BACK PANEL  
SIZE: 4-5 YEARS  
CUT X 1 MAIN

CUT AND STICK LINE

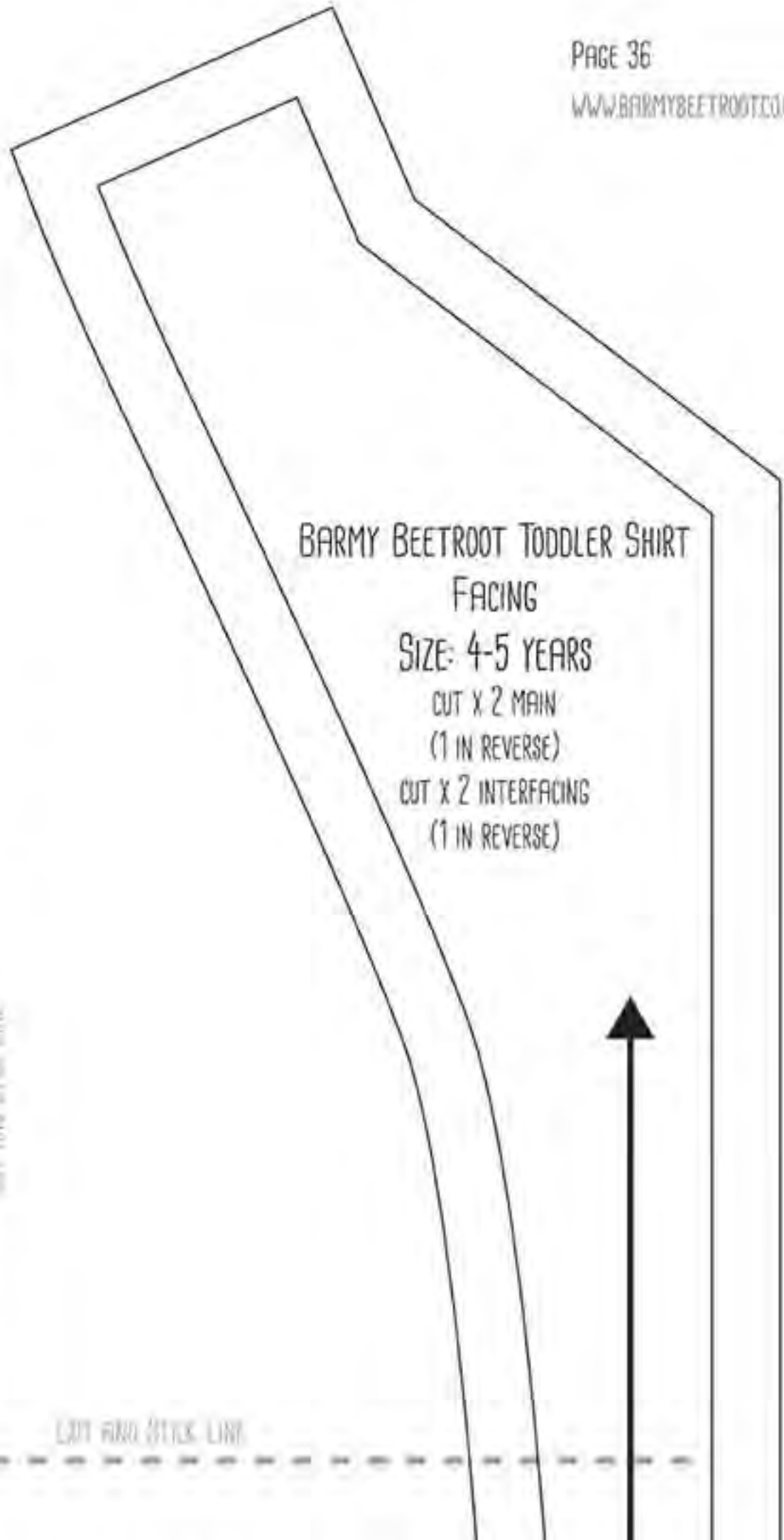
FOLD





CUT AND STICK LINE

CUT



BARMY BEETROOT TODDLER SHIRT  
FACING

SIZE: 4-5 YEARS

CUT X 2 MAIN

(1 IN REVERSE)

CUT X 2 INTERFACING

(1 IN REVERSE)

CUT AND STICK LINE

CUT AND STICK LINE







CUT FOLD STITCH LINE

BARMY BEETROOT TODDLER SHIRT  
BACK YOKE  
SIZE: 4-5 YEARS  
CUT X 1 CONTRASTING

